

# SONO Calm

HOTELS & RESORTS

## SONO CALM GOYANG

Story

SONO Calm Goyang, a leading presence in KINTEX, Korea's largest convention venue, and Hallyu World, set to become the cornerstone of Hallyu tourism, aspires to achieve success by presenting business clients with the finest business atmosphere and service.

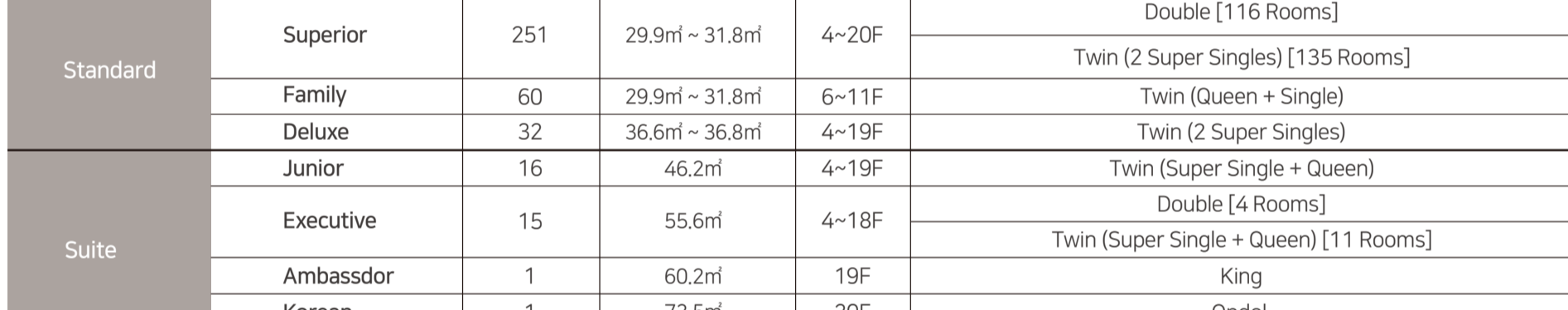
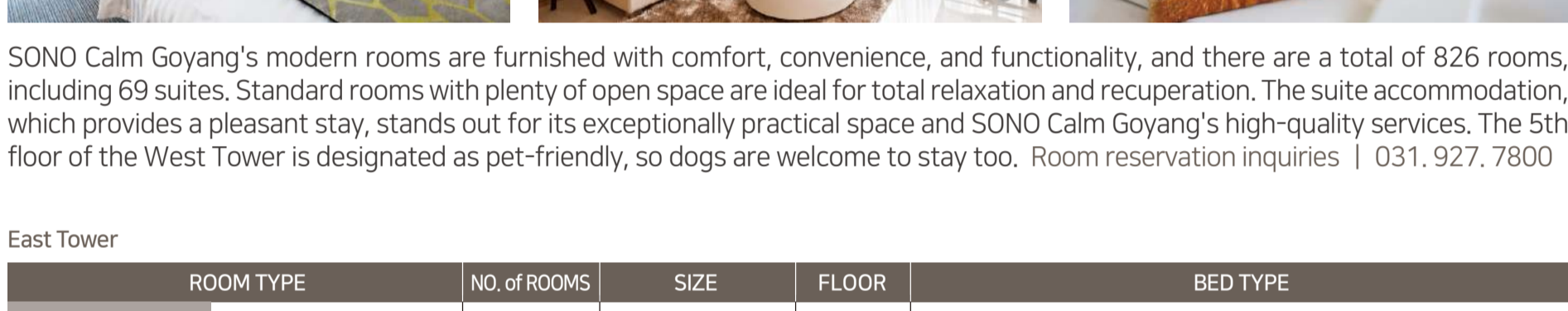
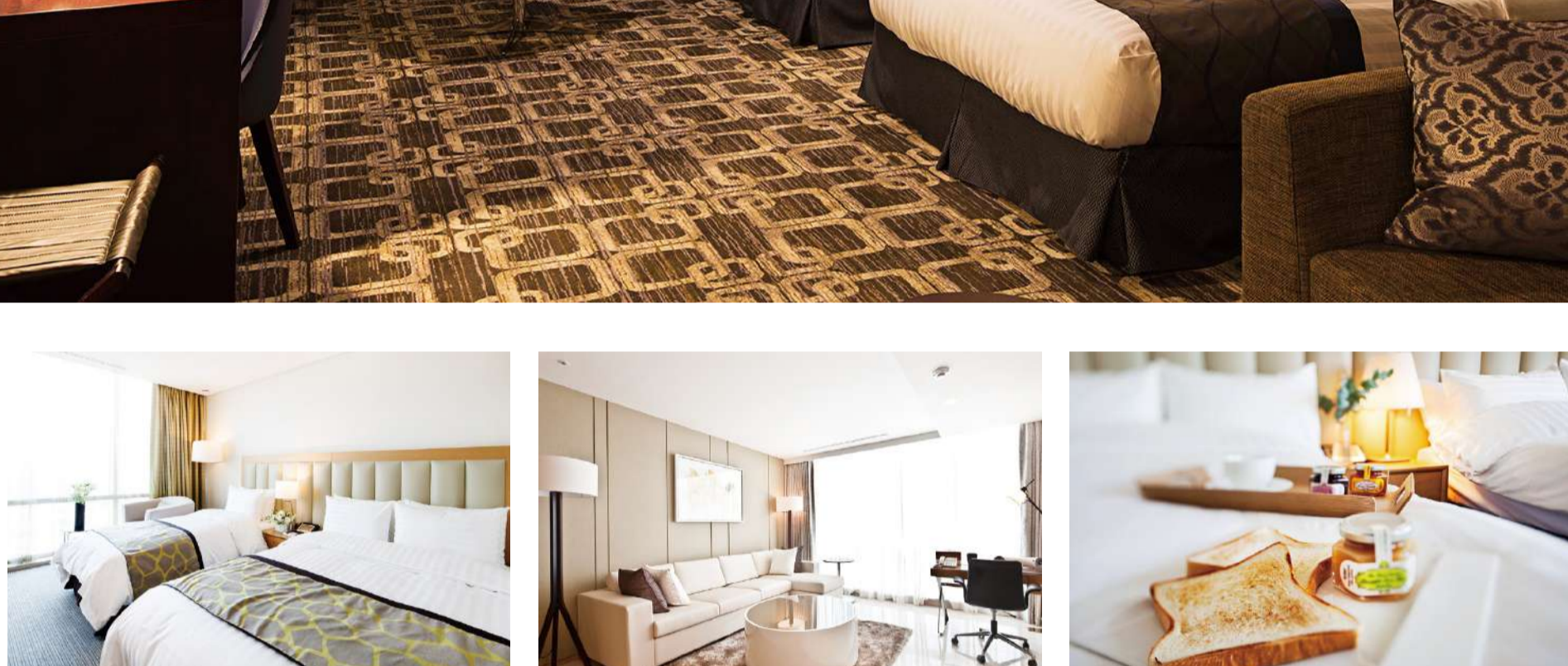
We also aspire to provide a truly peaceful environment where guests may unwind from the stresses of professional life.

SONO Calm Goyang is the sole luxury hotel in the northern region of Gyeonggi-do, and it will join Hallyu World as the metropolitan area's tourism hub.

By creating enjoyment in an environment that is rich with varied cultural elements, we hope to deliver a differentiated experience to both domestic and overseas customers.

| Division             | Content  |  |
|----------------------|--|--|
| Name                 | Sono Calm GOYANG                                     |  |
| Address              | 20, Taegeuk-ro, Ilsandong-gu, Goyang-si, Gyeonggi-do |  |
| Parking Lot          | 628 vehicles   |  |
| Telephone            | 031.927.7700   |  |
| Scale                | East / West Tower, Underground 4F / Overground 20F   |  |
|                      | Total Area   | East Tower: 7,189㎡ / West Tower: 6,543㎡  |
| Rooms                | Building Floor Area                                  | East Tower: 47,333㎡ / West Tower: 42,790㎡  |
|                      | Total 826 Rooms                                      | East Tower: 377 Rooms [Standard 343 Rooms, Suite 34 Rooms]<br>West Tower: 449 Rooms [Standard 414 Rooms, Suite 35 Rooms] |
| Restaurants          | IL Lago  | Lobby Lounge & Bar / Deli  |
|                      | Chef's Kitchen                                       | Buffet Restaurant  |
|                      | 竹林 (Zhulin)  | Chinese Restaurant   |
|                      | Thinking Dog   | Pet Cafe   |
| Banquet Halls        | Vista  | Cafeteria  |
|                      | Grand Ballroom                                       | Large Banquet Hall   |
|                      | Diamond / Crystal Ballroom                           | Medium Banquet Hall  |
|                      | Sapphire I, II / Lilac I, II / Rose I, II            | Small Banquet Hall   |
| Facilities           | Sauna  |  |
|                      | Gym  |  |
|                      | Pool (Outside)                                       |  |
|                      | Business Center                                      |  |
|                      | Executive Lounge                                     |  |
|                      | SONO Pet   |  |
|                      | Beauty, School, Boarding, Hospital, Playground       |  |
| Destination Distance | Gimpo Airport  | 16km 25 minutes by car   |
|                      | Incheon Airport                                      | 50km 45 minutes by car   |
|                      | Seoul Station  | 30km 40 minutes by car   |
|                      | KINTEX   | 1.5km 10 minutes by walk   |

## GUEST ROOMS



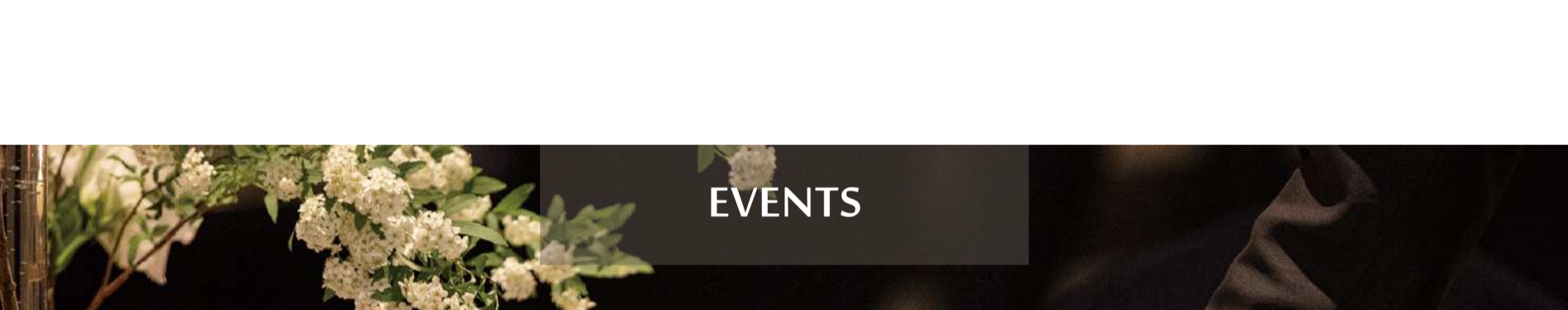
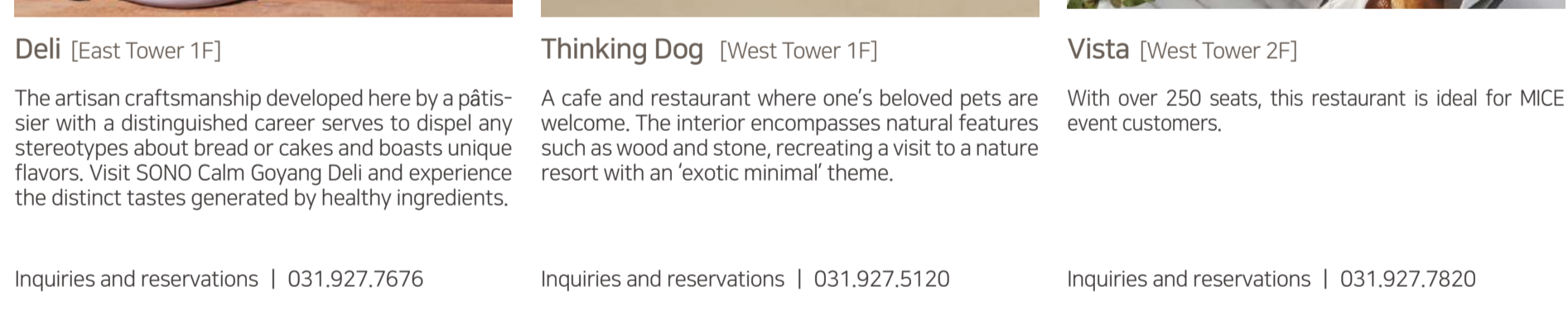
SONO Calm Goyang's modern rooms are furnished with comfort, convenience, and functionality, and there are a total of 826 rooms, including 69 suites. Standard rooms with plenty of open space are ideal for total relaxation and recuperation. The suite accommodation, which provides a pleasant stay, stands out for its exceptionally practical space and SONO Calm Goyang's high-quality services. The 5th floor of the West Tower is designated as pet-friendly, so dogs are welcome to stay too. Room reservation inquiries | 031.927.7800

| East Tower |              |      |               |          |  |
|------------|--------------|------|---------------|----------|--|
| ROOM TYPE  | NO. of ROOMS | SIZE | FLOOR         | BED TYPE |  |
| Standard   | Superior     | 251  | 29.9㎡ ~ 31.8㎡ | 4~20F    | Double [116 Rooms]                     |
|            | Family       | 60   | 29.9㎡ ~ 31.8㎡ | 6~11F    | Twin (2 Super Singles) [135 Rooms]     |
|            | Deluxe       | 32   | 36.6㎡ ~ 36.8㎡ | 4~19F    | Twin (Queen + Single)                  |
| Suite      | Junior       | 16   | 46.2㎡         | 4~19F    | Twin (2 Super Single + Queen)          |
|            | Executive    | 15   | 55.6㎡         | 4~18F    | Double [4 Rooms]                       |
|            | Ambassador   | 1    | 60.2㎡         | 19F      | Twin (Super Single + Queen) [11 Rooms] |
|            | Korean       | 1    | 73.5㎡         | 20F      | King                                   |
|            | Presidential | 1    | 115.8㎡        | 19F      | Ondol<br>King + Super Single X 2       |

| West Tower |              |      |               |          |                              |
|------------|--------------|------|---------------|----------|------------------------------|
| ROOM TYPE  | NO. of ROOMS | SIZE | FLOOR         | BED TYPE |                              |
| Standard   | Superior     | 400  | 24.8㎡ ~ 28.7㎡ | 3~20F    | Double [130 Rooms]           |
|            | Handicap     | 14   | 27.6㎡ ~ 29.5㎡ | 3~20F    | Twin (2 Singles) [251 Rooms] |
| Suite      | Family       | 35   | 51㎡           | 3~20F    | Double<br>Twin + Double      |

\* The pet-friendly rooms are located on the 5th floor of the West Tower. [A total of 26 rooms]  
\* Some rooms in the West Tower are managed as residences. ☹ Separate inquiry

## FOOD & BEVERAGE



**Chef's Kitchen** [East Tower 2F]

Chef's Kitchen is a premium international buffet restaurant that offers a wide range of global cuisines. Enjoy a feast of flavors with meals prepared in real time at the live station with fresh ingredients.

Inquiries and reservations | 031.927.7788

**Zhulin** [East Tower 1F]

Zhulin offers the epitome of high-quality Chinese cuisine in a contemporary setting. "Zhulin," which translates to "a lush green bamboo forest," represents a place where modern people can unwind after a long day. Promotional menus with seasonal ingredients are available.

Inquiries and reservations | 031.927.7666

**IL Lago** [East Tower 1F]

The lobby lounge and bar, 'IL LAGO', where guests may enjoy a wide choice of meals, is striking in its exquisite design of modern classics. Salads, pizzas, steaks, desserts, and a range of beverages are available.

Inquiries and reservations | 031.927.7677

**Deli** [East Tower 1F]

The artisan craftsmanship developed here by a pâtissier with a distinguished career serves to dispel any stereotypes about bread or cakes and boasts unique flavors. Visit SONO Calm Goyang Deli and experience the distinct tastes generated by healthy ingredients.

Inquiries and reservations | 031.927.7676

**Thinking Dog** [West Tower 1F]

A cafe and restaurant where one's beloved pets are the center of attention. The interior encompasses natural features such as wood and stone, recreating a visit to a nature resort with an 'exotic minimal' theme.

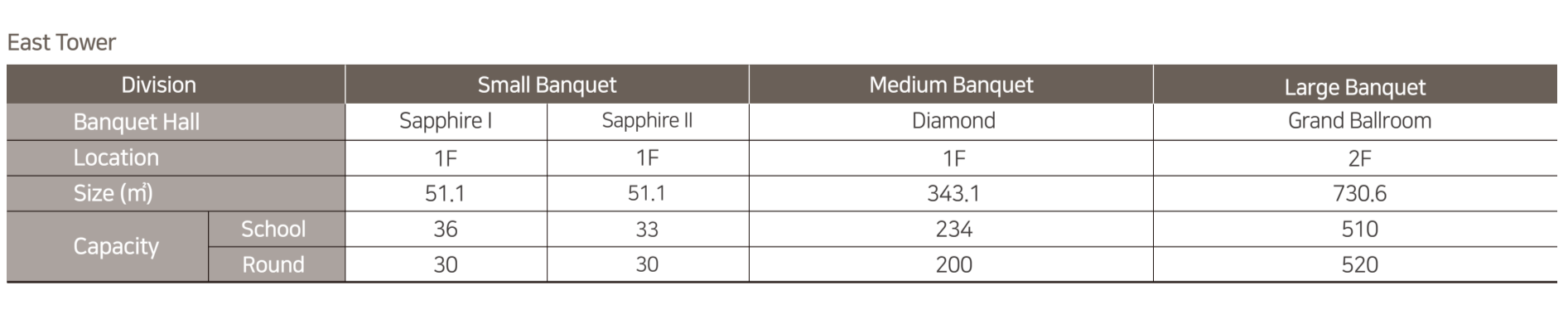
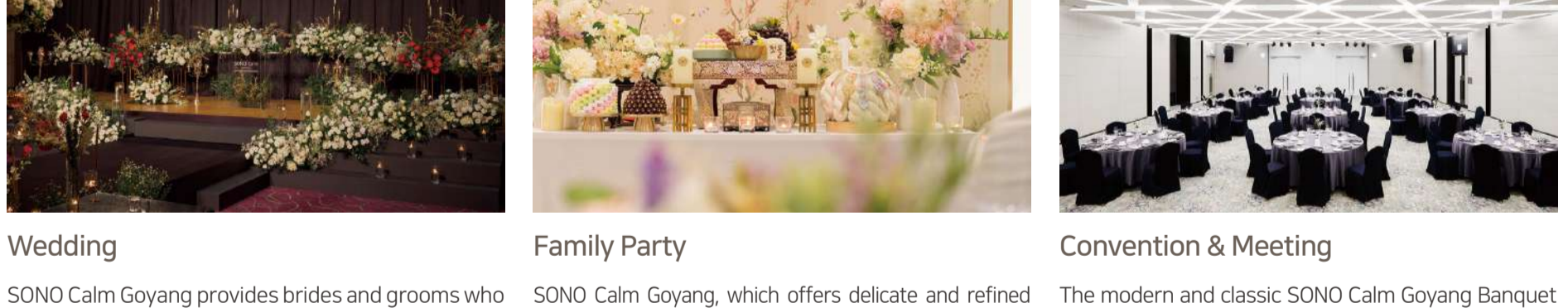
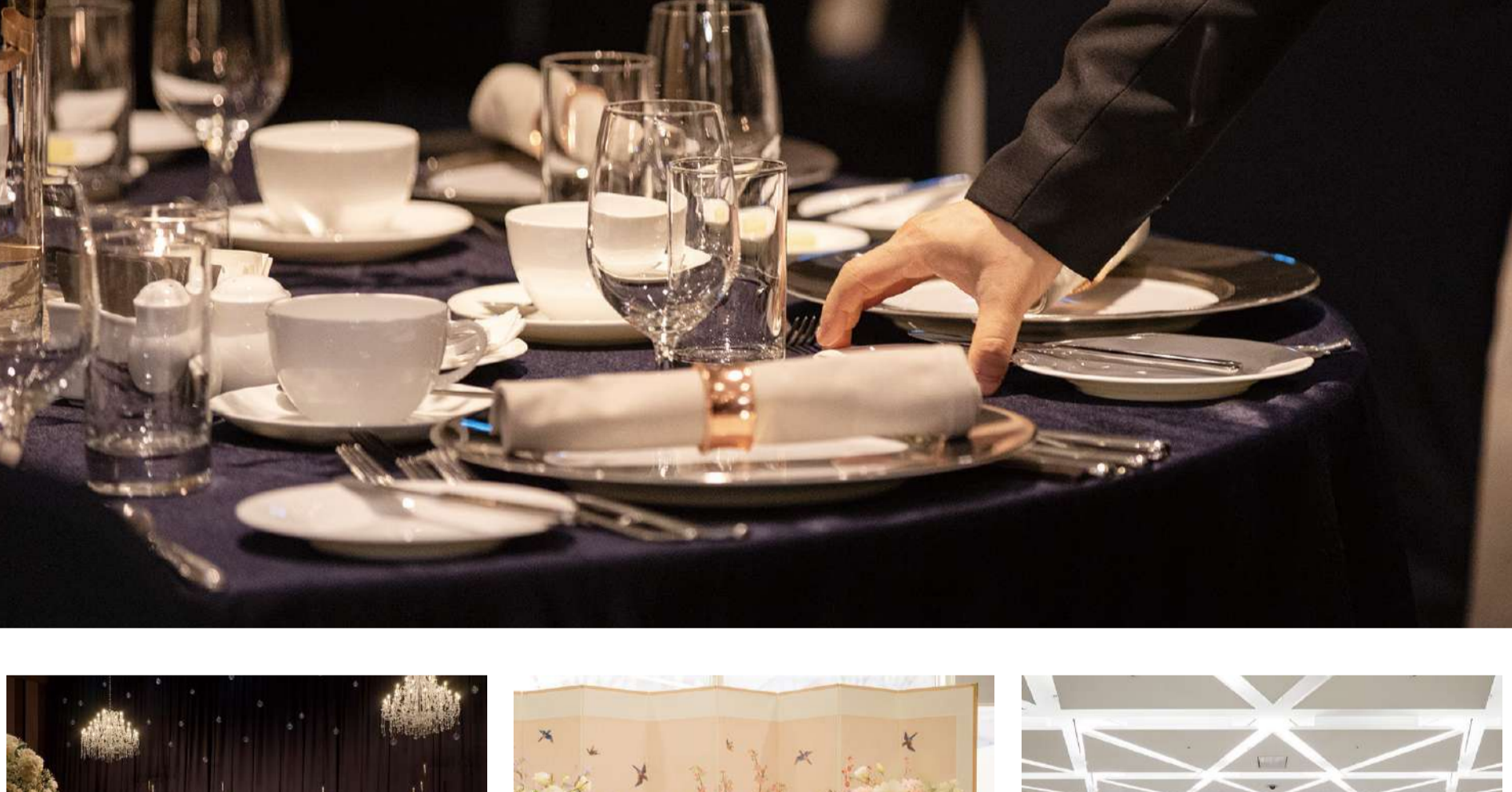
Inquiries and reservations | 031.927.5120

**Vista** [West Tower 2F]

With over 250 seats, this restaurant is ideal for MICE event customers.

Inquiries and reservations | 031.927.7820

## EVENTS



**Wedding**

SONO Calm Goyang provides brides and grooms who desire elegant and luxury weddings with lovely, unforgettable moments. We help realize simple yet exquisite "MODERN CLASSIC WEDDING"-concept ceremonies with a sophisticated production style that is neither too long nor too short. Moreover, for small-scale weddings, it is feasible to create a private wedding with an elegant and simple design, in vogue with the current style.

Inquiries and reservations | 031.927.7720

**Family Party**

SONO Calm Goyang, which offers delicate and refined services, can host parties with a variety of themes. We will plan a special day with your loved ones, such as a birthday celebration for your parents, with total warmth and gratitude. For your adorable baby's first birthday party at SONO Calm Goyang, the only luxury hotel in northern Gyeonggi-do, we present a marvelous day with bespoke decorations as well as the hotel's excellent food and services.

Inquiries and reservations | 031.927.7720

**Convention & Meeting**

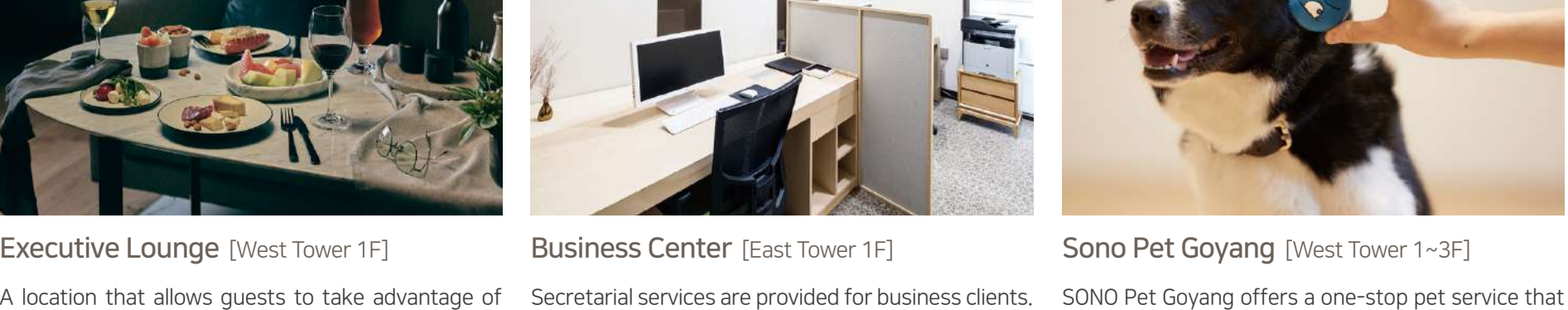
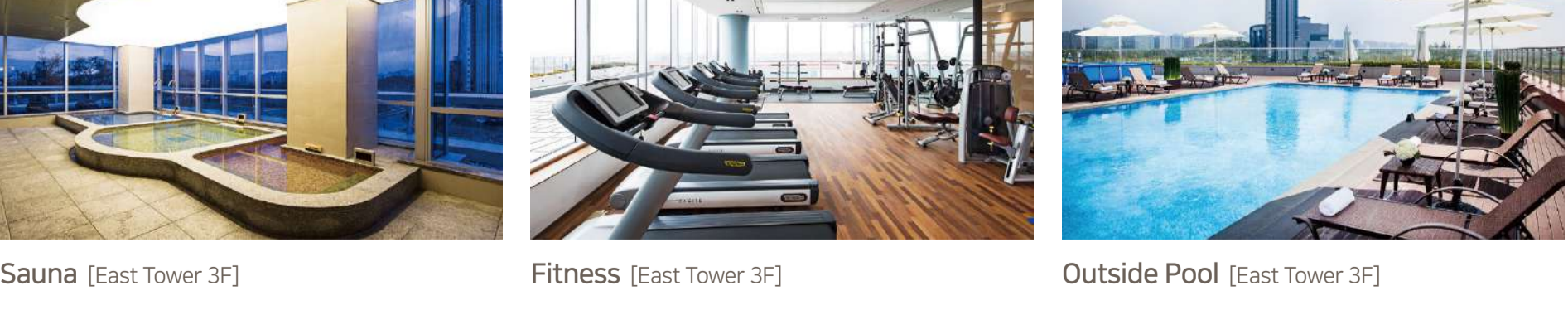
The modern and classic SONO Calm Goyang Banquet Hall is a high-class business venue outfitted with cutting-edge audiovisual technology. Seminars, meetings, exhibits, and conferences can all be hosted in varying sizes depending on the magnitude of an event.

Inquiries and reservations | 02.2222.8964-5

| East Tower   |               |             |                |                |  |
|--------------|---------------|-------------|----------------|----------------|--|
| Division     | Small Banquet |             | Medium Banquet | Large Banquet  |  |
| Banquet Hall | Sapphire I    | Sapphire II | Diamond        | Grand Ballroom |  |
| Location     | 1F            | 1F          | 1F             | 2F             |  |
| Size (㎡)     | 51.1          | 51.1        | 343.1          | 730.6          |  |
| Capacity     | School        | 33          | 234            | 510            |  |
|              | Round         | 30          | 30             | 520            |  |

| West Tower   |               |         |         |          |                  |
|--------------|---------------|---------|---------|----------|------------------|
| Division     | Small Banquet |         |         |          | Medium Banquet   |
| Banquet Hall | Rose I        | Rose II | Lilac I | Lilac II | Crystal Ballroom |
| Location     | 2F            | 20F     | 2F      | 2F       | 2F               |
| Size (㎡)     | 86.9          | 79.3    | 141.6   | 129.2    | 286.3            |
| Capacity     | School        | 36      | 36      | 60       | 165              |
|              | Round         | 32      | 32      | 60       | 160              |

## FACILITIES



**Sauna** [East Tower 3F]

We provide men and women with hot and cold baths, as well as both events, ensuring precious rest and relaxation for the mind and body alike.

Inquiries and reservations | 031.927.7626

**Fitness** [East Tower 3F]

A space that has been prepared by introducing state-of-the-art fitness equipment and facilities in order for clients to stay fit as well as enjoy peaceful rest.

Inquiries and reservations | 031.927.7626

**Outdoor Pool** [East Tower 3F]

An outdoor swimming pool with a relaxation theme in a city full of leisure. We make sure our customers stay healthy and enjoy their free time. (Summer season only)

Inquiries and reservations | 031.927.7626

**Executive Lounge** [West Tower 1F]

A location that allows guests to take advantage of numerous perks such as tea time with delicious desserts and coffee as well as happy hour with varied appetizers and alcoholic beverages.

Inquiries and reservations | 031.927.7633

**Business Center** [East Tower 1F]

Secretarial services are provided for business clients. (Available all year)

Inquiries and reservations | 031.927.7700

**Sono Pet Goyang** [West Tower 1~3F]

SONO Calm Goyang offers a one-stop pet service that includes SONO Calm Pet Animal Hospital, which has professional medical staff that provide rehabilitation-oriented services, SONO Calm Pet School, which has various play programs with pet masters, SONO Calm Boarding, which allows guests to leave pets in peace of mind, and SONO Calm Beauty, which offers spa and hair care services delivered by pet beauty experts.

Animal Hospital | 031.927.5140  
School | 031.927.5135  
Beauty | 031.927.5130